

**COUNTY PURCHASING OFFICE**  
**Pushmataha County Court House**  
**302 S W "B" Street, Antlers, Oklahoma 74523**  
**Phone: 580-298-6227**

**INVITATION TO BID**

PLEASE REVIEW TERMS & CONDITIONS ON REVERSE  
 SIDE RELATING TO SUBMISSION OF THIS BID

NOTARIZED AFFIDAVIT COMPLETIONS & SIGNATURE REQUIRED ON REVERSE SIDE

<b>DATE ISSUED</b>
December 29 <sup>th</sup> 2014
PAGE 1 OF

<b>BID NUMBER</b> FRAZIER CREEK BRIDGE # 046	<b>BID CLOSING DATE &amp; HOUR</b> January 9 <sup>th</sup> 2014 @ 4:00 PM	<b>REQUIRED DELIVERY DATE</b> DAYS AFTER AWARD OF PURCHASE ORDER
<b>TERMS</b>		<b>DATE OF DELIVERY:</b>

DESCRIPTION	UNIT PRICE	TOTAL
<p align="center"><b>THE PUSHMATAHA COUNTY BOARD OF COUNTY COMMISSIONERS IS CURRENTLY ACCEPTING SEALED BIDS ON:</b></p> <p align="center"><b><u>FRAZIER CREEK BRIDGE # 046 Located 2 miles south and 3 miles east of the Junction of SH 93 and SH 3 in Rattan</u></b></p> <p align="center"><b>Construct 75' long I-Beam Single Span x 24' Clear Roadway Pile Bent Bridge</b></p> <p align="center"><b>*****SPECIFICATIONS ARE ENCLOSED*****</b></p> <p align="center"><b>The Oklahoma Department Of Transportation Standard Specifications For Highway Construction Edition 1999, Will Govern.</b></p> <p align="center"><b>The Attached Affidavit Of Independent Contractor Status Will Have To Be Completed &amp; Notarized.</b></p> <p align="center"><b>THE SUCCESSFUL BIDDER SHALL PROVIDE PROOF OF LIABILITY INSURANCE WITH PUSHMATAHA COUNTY NAMED AS ADDITIONAL INSURED IF THE BID AMOUNT IS OVER \$5,000.00</b></p> <p align="center"><b>*SEE ATTACHED RESOLUTION*</b></p> <p align="center"><b>Bids Will Be Received In The County Clerks Office Until:</b>  <b><u>January 9<sup>th</sup> 2014 @ 4:00 pm</u></b></p> <p align="center"><b>Bid Opening &amp; Award :</b>  <b><u>January 12<sup>th</sup> 2014 @ 9:00 am</u></b></p> <p align="center"><b>FOR MORE INFORMATION CONTACT:</b>  <b><u>JERRY DUNCAN @ 580-587-2547 or 580-271-2020</u></b></p> <p align="center"><b>In The County Commissioners Office (304 SW "B" St, Antlers, OK.) During The County Commissioners Regularly Scheduled Meeting.</b></p> <p align="center"><b>The Board Of County Commissioners Reserve The Right To Reject Any And All Bids Or Waive Any Informality In All Bids And To Make Award For The Best Interest Of Pushmataha County.</b></p> <p align="center"><b><u>ALL BIDS MUST HAVE A NON-COLLUSION AFFIDAVID</u></b>  <b>(Back Of This Form)</b></p>		

PUSHMATAHA COUNTY

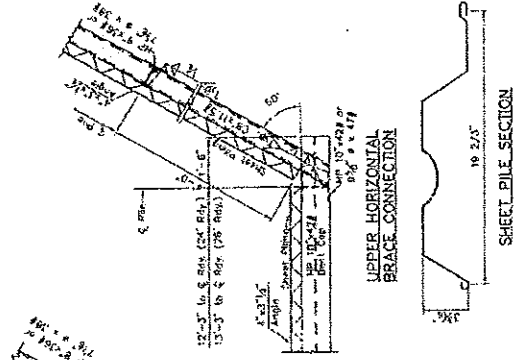
PROPOSAL DESCRIPTION

Construct 75' long I-Beam Single Span x 24' Clear Roadway Pile Bent Bridge

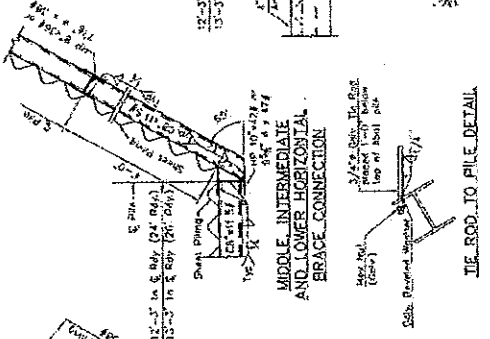
Pushmataha County will receive bids for partial construction of a pile bent single span bridge 75' long x 24' clear roadway over Frazier Creek, located 2.0 miles south and 3.0 miles east of the Junction of SH 93 and SH3 in Rattan, Pushmataha County. The work shall consist of furnishing and driving 10 - 10"x42#x20' long steel piles for the abutment and 8 - 10"x42#x26' long steel piles for the wings. Each pile will be driven to achieve an ultimate capacity of 70 tons or a minimum of 5' below the bottom of the channel floor. The successful bidder will be responsible for staking the piling and successfully driving the piling to complete 2 abutment bents and 4 wings and will align the tops, cutoff the piles to a uniform elevation as directed by the County Commissioner and furnish and weld a 12"x 53# x 25' long cap to the driven piles in the bents. The top of the wing piles will be cutoff to the elevation of the top of the safety rail and the guardrail safety rail will be attached to the wing piles. The successful bidder will transport, place and weld 5-W36"x135#x78'10 and 79'4' and 3-84'0" long beams that will be furnished by the county to the tops of the piling caps. Two of the beams are currently located at the CED office in Hugo at 203 Pepsi Cola Avenue and three of the beams are located at the Latimer County Staging area in the Industrial complex at Wilburton. The 5 beams shall be spaced evenly with outside dimensions being 24'-7". 3"x3"x1/4" stiffeners shall be placed on an "X" configuration between the beams at the ends and at the center of the span. The successful bidder will furnish and secure in place approx. 1,400 sf of 5.6# 12 gage galv. steel sheet piling as a backwall for the piling bent and the wings. The contractor will attach steel supports that can be used angle iron or channel iron between steel piles to which the sheet piling will be secured. 1.9# 26 gage steel leave in place forms shall be furnished, cut to fit a 24'-7" wide x 75' long concrete deck and shall be placed as forms for the concrete deck (approximately 1843 S.F) . 8"x11.5# steel channel iron shall be furnished and secured in place as outside forms for the deck. 4000 psi concrete shall be furnished and placed for the deck. The deck shall slope from 10" in the center to 8" on the sides. Approximately 51 C.Y of concrete will be required. Approximately 8,400# of reinforcing steel shall be furnished and placed in the deck as directed by the county. A minimum of 2" clearance will be required for the reinforcing steel from the surface of the concrete. Steel chairs shall be furnished to provide the required clearance. 22 - W6"x9#x6'-3" long @ 6'3" c-c galv. steel post shall be furnished and securely attached to the 8" channel and the bottom of the I-beam for support of the W-beam guard rail safety rail. The top of the posts shall be cut-off or shall be fabricated to provide 2'4" above the deck concrete. 200' of guard rail shall be furnished and attached to the w-beam post along the span and shall be extended along and attached to the wing piling. Wings shall be 12'-6" long on a 30° angle from the longitudinal direction of the bridge. All welding shall be completed by a certified welder. General standards for the bridge construction are available at the County Commissioners Office, Pushmataha County Court House, Phone 580-298-2512.

Bid will be Lump Sum

**ABUTMENT  
STEEL PILING & BRIDGE SEAT  
SHEET PILING BACKWALL & RO' WINGS  
24 AND 26 ROADWAY**

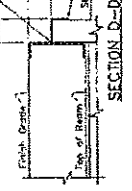


**SHEET PILE SECTION**

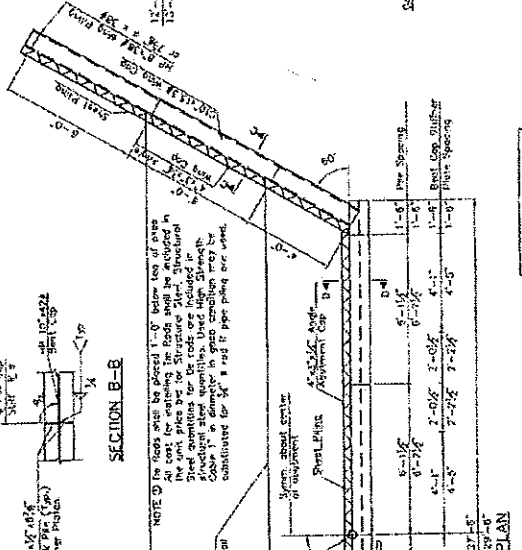


**IR. ROD TO PILE DETAIL**

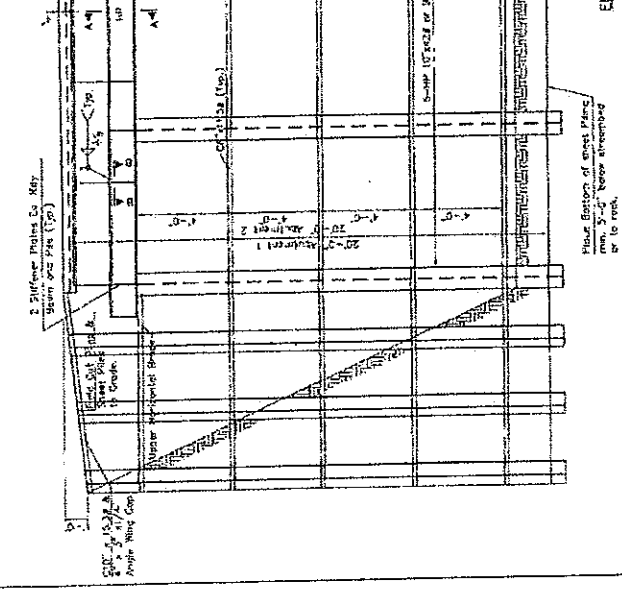
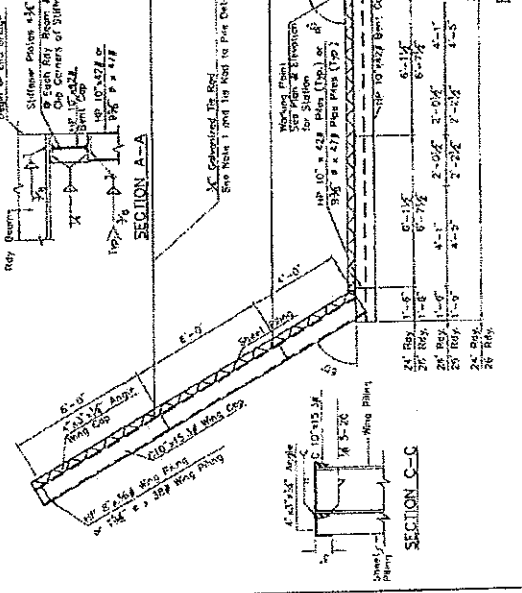
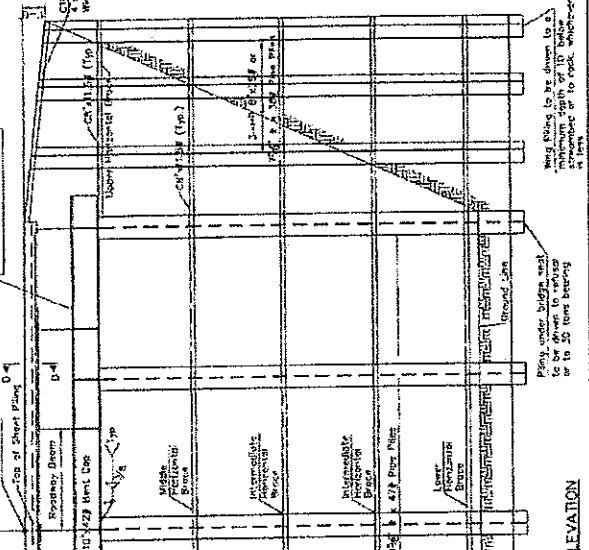
**STEEL PILING:**  
Steel Sheet Piling shall be made from steel conforming to ASTM A572 Grade 50 and shall be 48" high, 12.5 lbs per foot, with a minimum yield strength of 50,000 psi and a minimum tensile strength of 65,000 psi. The piling shall be furnished with a minimum wall thickness of 0.250 inches. The piling shall be furnished with a minimum length of 20 feet. The piling shall be furnished with a minimum length of 20 feet. The piling shall be furnished with a minimum length of 20 feet.



**SECTION D-D**



**ELEVATION**



**NOTE:** The piling shall be furnished with a minimum length of 20 feet. The piling shall be furnished with a minimum length of 20 feet. The piling shall be furnished with a minimum length of 20 feet.

**NOTE:** The piling shall be furnished with a minimum length of 20 feet. The piling shall be furnished with a minimum length of 20 feet. The piling shall be furnished with a minimum length of 20 feet.

**NOTE:** The piling shall be furnished with a minimum length of 20 feet. The piling shall be furnished with a minimum length of 20 feet. The piling shall be furnished with a minimum length of 20 feet.

**NOTE:** The piling shall be furnished with a minimum length of 20 feet. The piling shall be furnished with a minimum length of 20 feet. The piling shall be furnished with a minimum length of 20 feet.

**NOTE:** The piling shall be furnished with a minimum length of 20 feet. The piling shall be furnished with a minimum length of 20 feet. The piling shall be furnished with a minimum length of 20 feet.

**NOTE:** The piling shall be furnished with a minimum length of 20 feet. The piling shall be furnished with a minimum length of 20 feet. The piling shall be furnished with a minimum length of 20 feet.

**NOTE:** The piling shall be furnished with a minimum length of 20 feet. The piling shall be furnished with a minimum length of 20 feet. The piling shall be furnished with a minimum length of 20 feet.